

Designing a spring scene

Instructions No. 2982

Difficulty: Beginner 🍃🍃🍃🍃

Working time: 5 Hours

This building kit will make your spring decorations unique, enchanting and a real eye-catcher on any windowsill or table!

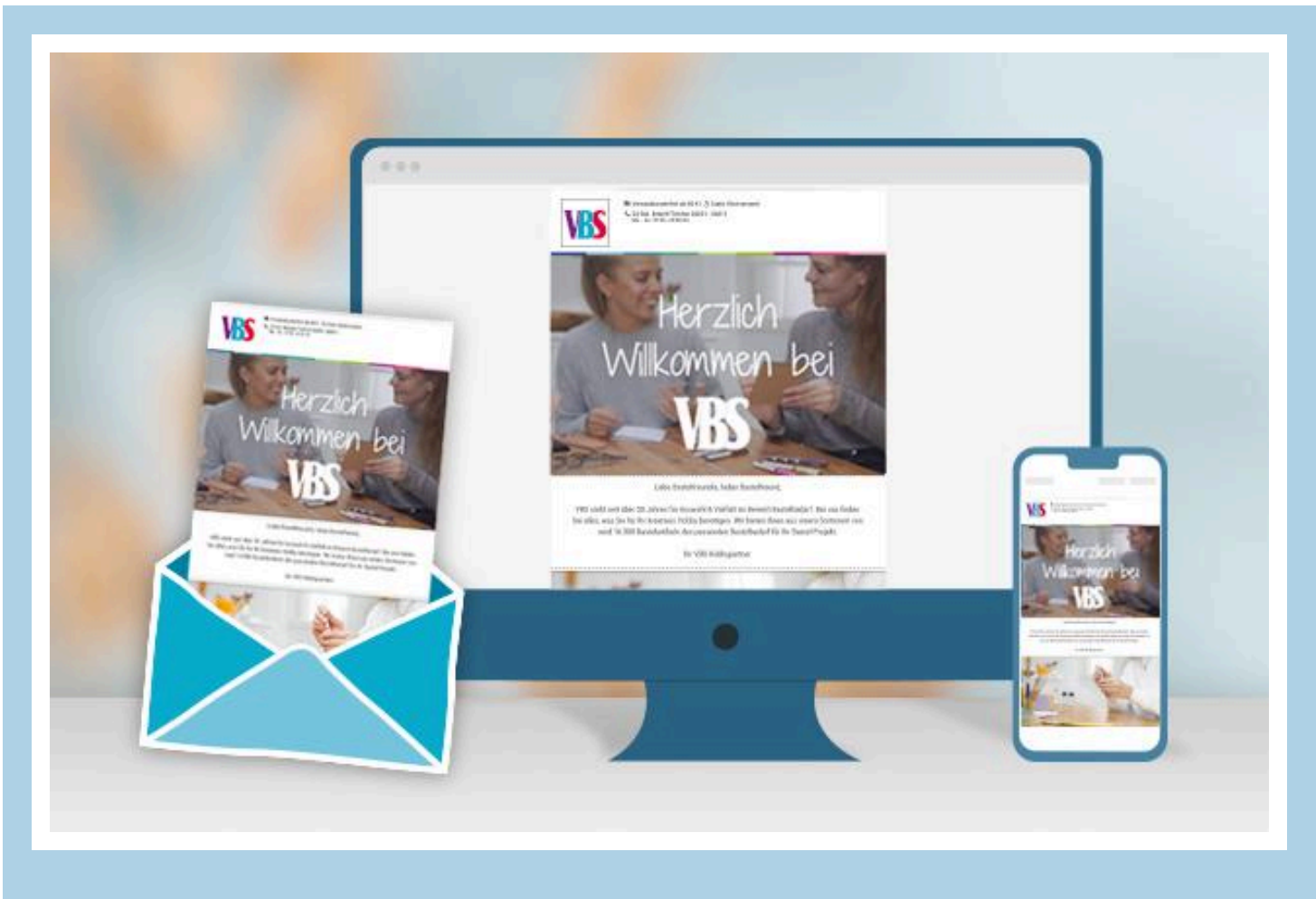


First paint the **wooden silhouette** and the **building kit** are painted with the recommended or self-selected **colors**.

The **building kit** and the **beef disk** are decorated with **moss** decorated. Now glue them together slightly offset and attach the **sheep** to them.

Now dab the **bottles** with **frosteffect paint**. You can use a **sponge** and some **masking tape** to help you do this. Use the masking tape to cover the areas where you don't want any paint to go.

Now attach the **bows** to the **glass vases** and paint them in the colors of your choice **scatter decoration** in the colors of your choice. Finally, stick them onto the bottles.



New instructions

Straight to your inbox every week

register now >

Article information:

Article number	Article name	Qty
16711	VBS Glass vases "Bottle", 2 pieces	1
27492	VBS Craft paint, 50 mlAntique White	1
27479	VBS Craft paint, 50 mlVanilla	1
27469	VBS Craft paint, 50 mlBeige	1
27509	VBS Craft paint, 50 mlOlive	1
27474	VBS Craft paint, 50 mlAntique Rosé	1
618984	VBS Birch discs, 10 pieces	1
608558	VBS Moss "Dark green"	1
27874	VBS Frost Effect Liner	1
23111	Ribbon cotton lookPink	1
22630	VBS Scatter decorations "Maja"	1
19547	Apple blossom branch	1
130851	VBS Painting sponges	1
70522	Crepe-Adhesive tape, 50 m	1